

Approved	Checked	Designed	DEVELOPMENT SPECIFICATION						
<i>T. Ikeda</i>	<i>H. Ito</i>	<i>K. Kobayashi</i>	P/N : LN J 1 1 5 W 8 6 R A				1 8	4	
T	Y	P	E	Bi-color (Green / Red) Light Emitting Diode					
A P P L I C A T I O N				Indicators					
M A T E R I A L				Green (GaIn) / Red(GaAlAs)					
O U T L I N E				Attached					
A B S O L U T E				※1 P	※2 I <sub>FP</sub>	※3 I <sub>FIC</sub>	V <sub>R</sub>	T <sub>opr</sub>	T <sub>stg</sub>
M A X I M U M				(G) (R)	(G) (R)	(G) (R)	(G) (R)		
R A T I N G S				40 55	50 60	10 20	5 3	-30~+85	-40~+100
C O N D I T I O N				T <sub>a</sub> = 25 ± 3 °C					
Test Specification									
Item		Symbol	Condition		Type	Limit		Unit	
						Min	Max		
Green									
Forward Voltage		V <sub>F</sub>	I <sub>F</sub> = 5 mA		3.0		3.7	V	
Reverse Leakage Current		I <sub>R</sub>	V <sub>R</sub> = 5 V				10	μA	
Luminous Intensity ※4		I <sub>o</sub>	I <sub>F</sub> = 5 mA · DC		34	12.9		mcđ	
Peak Emission Wavelength		λ <sub>p</sub>	I <sub>F</sub> = 5 mA · DC		525			nm	
Spectral Line Half Width		Δλ	I <sub>F</sub> = 5 mA · DC		45			nm	
Red									
Forward Voltage		V <sub>F</sub>	I <sub>F</sub> = 10 mA		1.72		2.5	V	
Reverse Leakage Current		I <sub>R</sub>	V <sub>R</sub> = 3 V				100	μA	
Luminous Intensity ※4		I <sub>o</sub>	I <sub>F</sub> = 10 mA · DC		6.7	2.8		mcđ	
Peak Emission Wavelength		λ <sub>p</sub>	I <sub>F</sub> = 10 mA · DC		655			nm	
Spectral Line Half Width		Δλ	I <sub>F</sub> = 10 mA · DC		20			nm	
※1 (G) : Green (R) : Red ※2 The condition of I <sub>FP</sub> is duty 10 % , pulse width 1 ms. Please contact the Panasonic local office if you design at low current (blow 1mA DC) or pulse current operation and have any questions. ※3 When 2 light emitted at the same time , the total current (I <sub>FP</sub> or I <sub>FIC</sub> ) must be (G) I <sub>FP</sub> < 50 mA , I <sub>FIC</sub> < 9 mA (R) I <sub>FP</sub> < 60 mA , I <sub>FIC</sub> < 18 mA ※4 Measurement Tolerance is ±20%. ※5 Compositions of the lead····Cu/Ni/Au plating ※6 Package····Light white diffusion type. ※7 Soldering conditions····Refer to Handling note.									
Jun. 28. 2001									

Approved    Checked    Designed

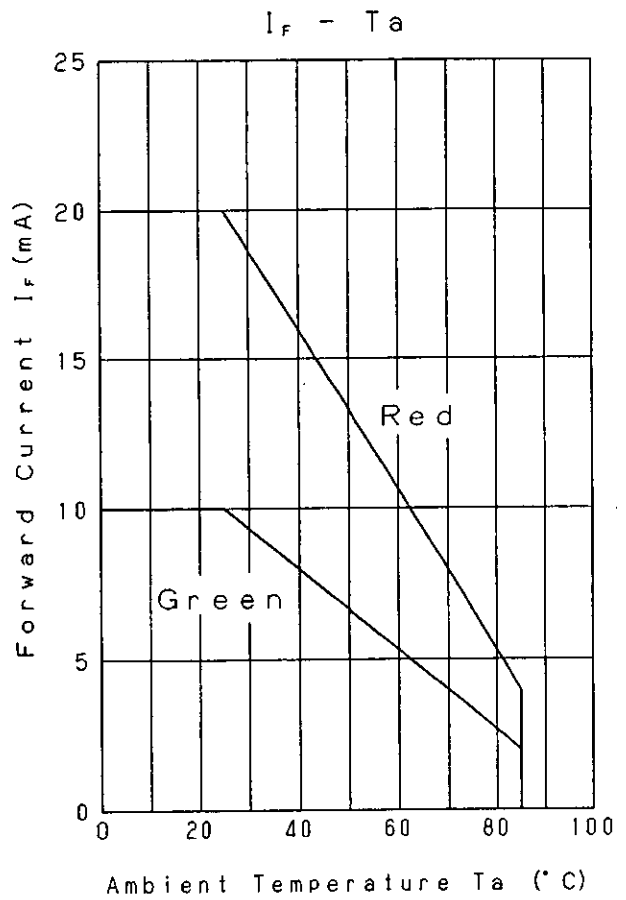
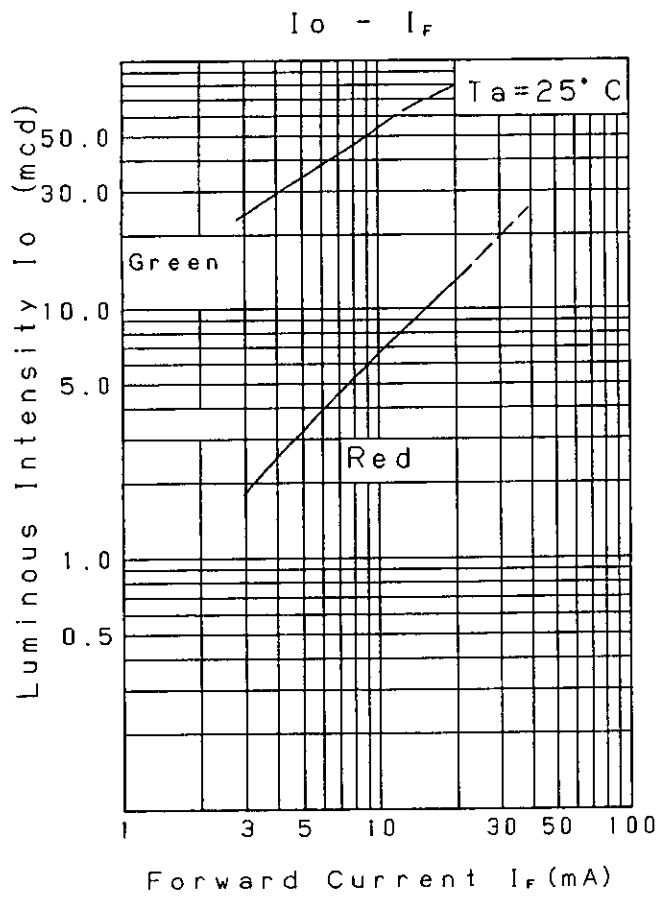
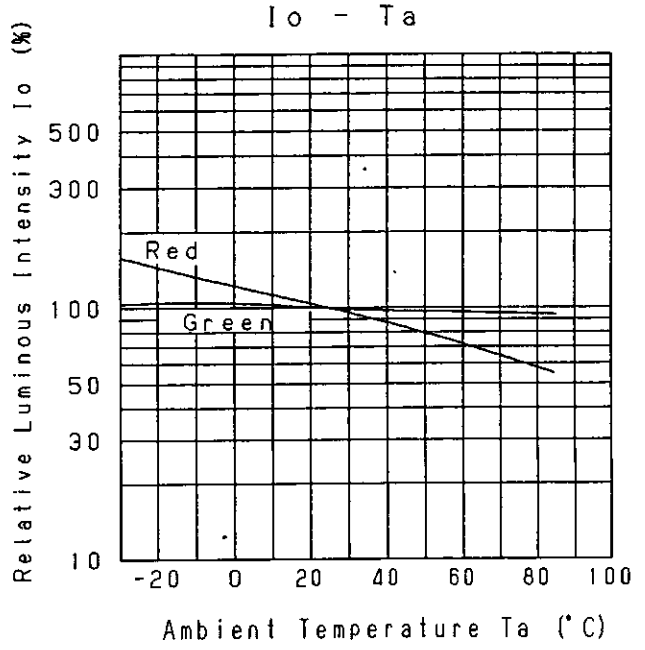
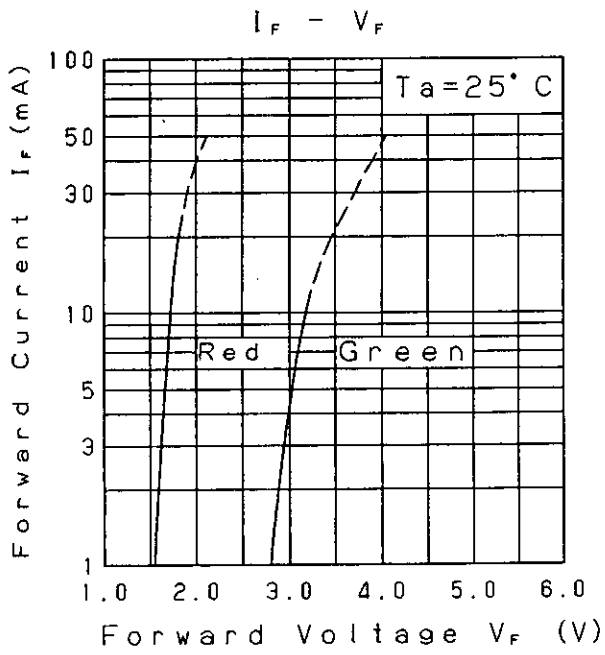
DEVELOPMENT SPECIFICATION

T. Oheda  
M. W.  
K. Akita

P/N: LNJI15W86RA

18

5



Jun. 28. 2001

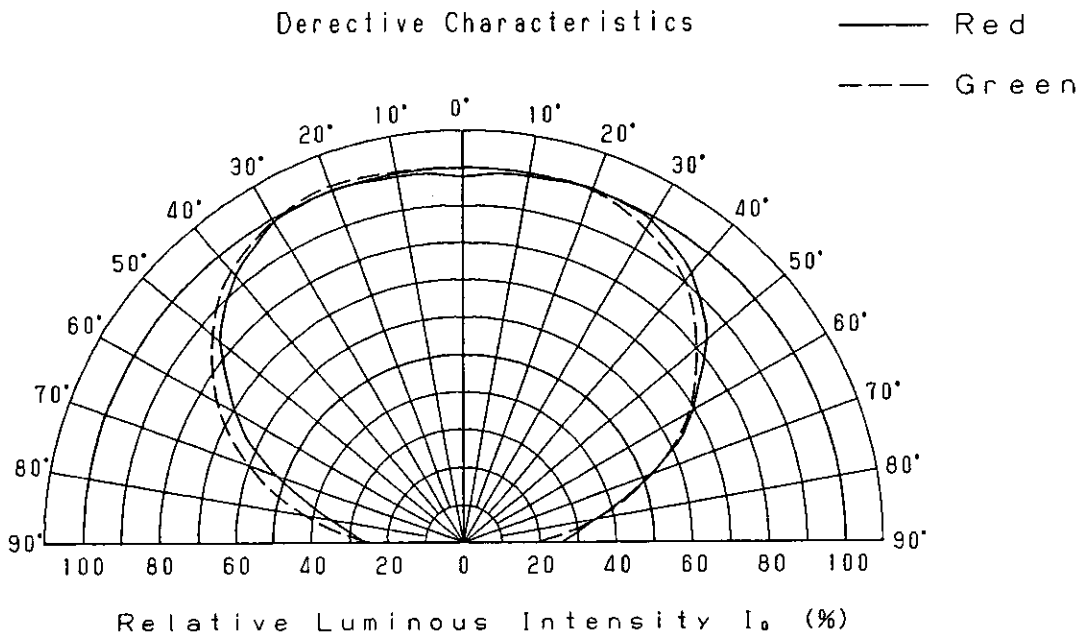
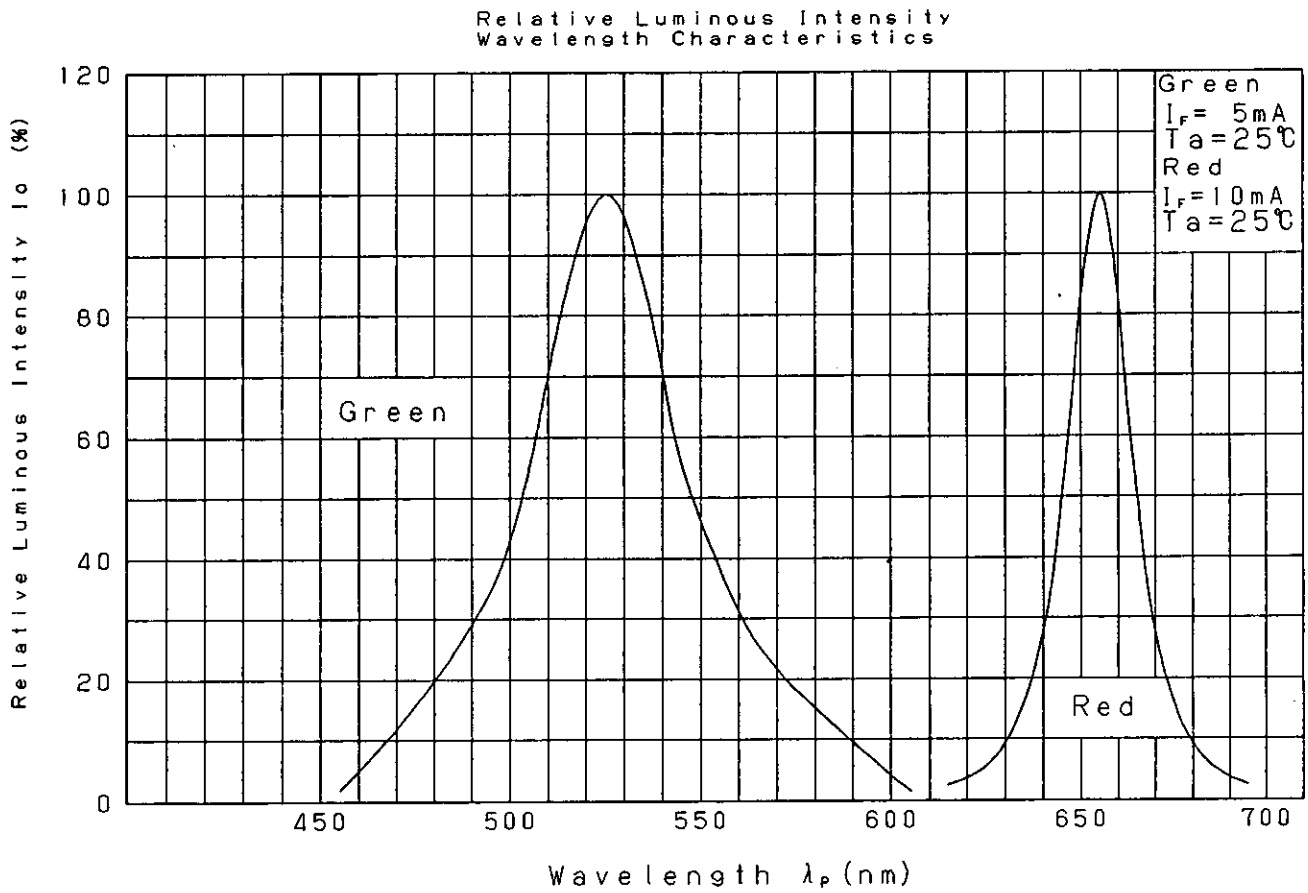
Approved <i>T. Shady</i>	Checked <i>M. W.</i>	Designed <i>K. Sakurai</i>
-----------------------------	-------------------------	-------------------------------

# DEVELOPMENT SPECIFICATION

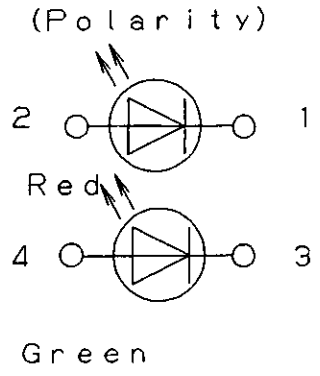
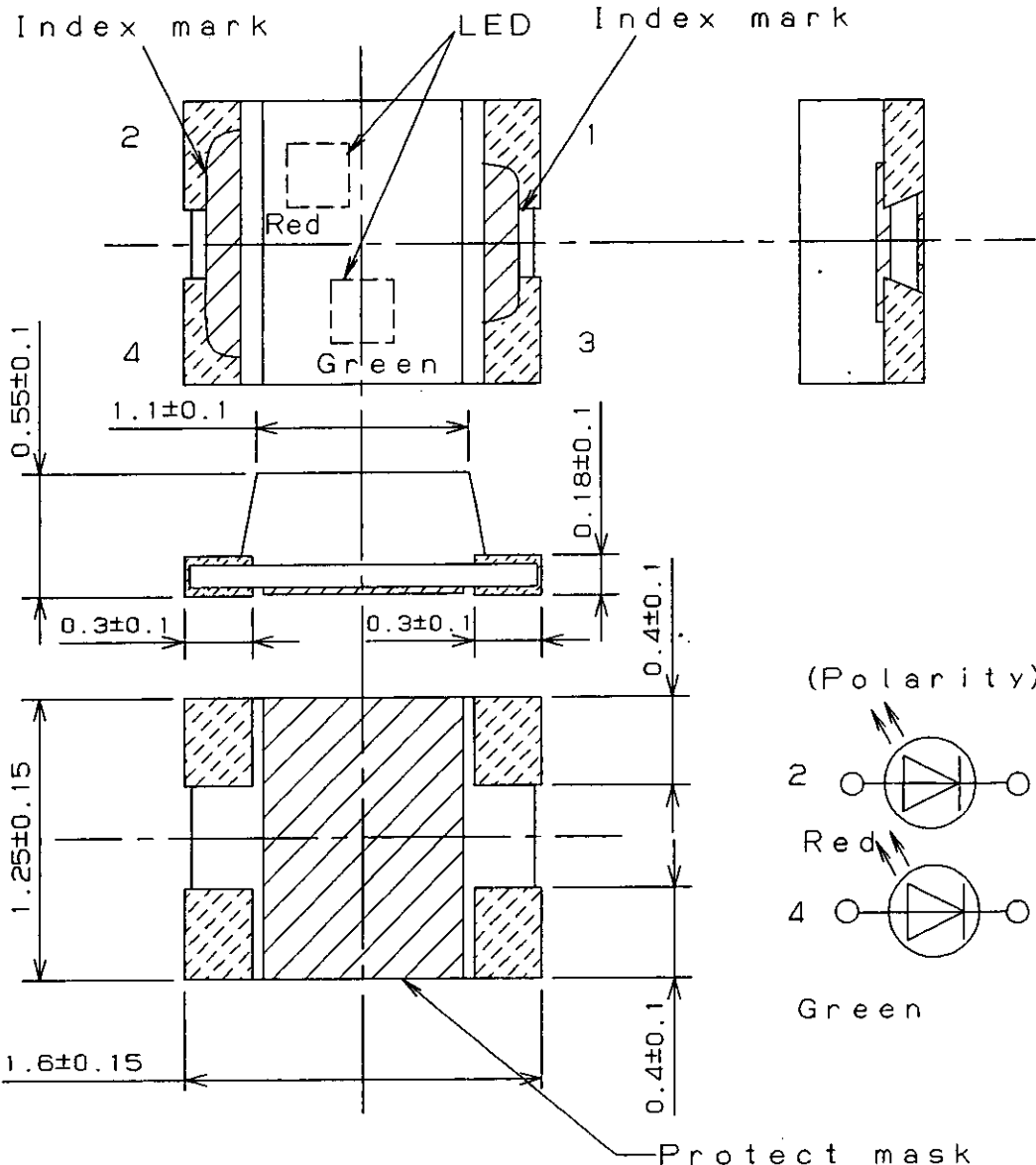
P/N: LNJ115W86RA

18

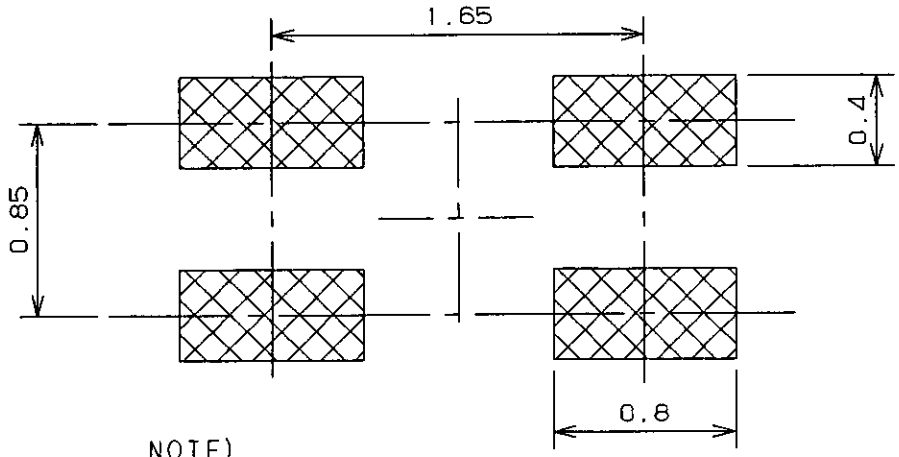
6



Jun. 28. 2001



(Recommended Land Layout)



NOTE)

1. Dimension of package doesn't include projections on electrode.
2. Unit:mm

Jun.28.2001			
-------------	--	--	--